



## Join us on May 12 for Spring Benefit 2022

**Sponsorship deadline: Sunday, April 3**

Please mark your calendars and join us on **Thursday, May 12, 2022** for MPA's Spring Benefit. Now in its 60th year, MPA relies on the funds raised at Spring Benefit to further its mission of connecting art & community. Co-chaired by Mary Cull and Anne Polk (pictured), the sunset party will take place at Founders Ridge, the private residence of our gracious hosts, Kathy and Frank Finelli, located in The Reserve. We look forward to welcoming you to the stunning grounds for MPA's signature spring fête in this magical outdoor oasis.

**Please consider joining us as an MPA Spring Benefit Sponsor.**

Sponsors confirmed by **this Sunday, April 3** will be included in this year's invitation, and other communications supporting the event. To see the complete list of sponsor benefits, [visit our website](#).

Thank you for your generous support as we celebrate MPA's 60th year. We hope to see you on May 12th!

### Sponsor MPA Spring Benefit

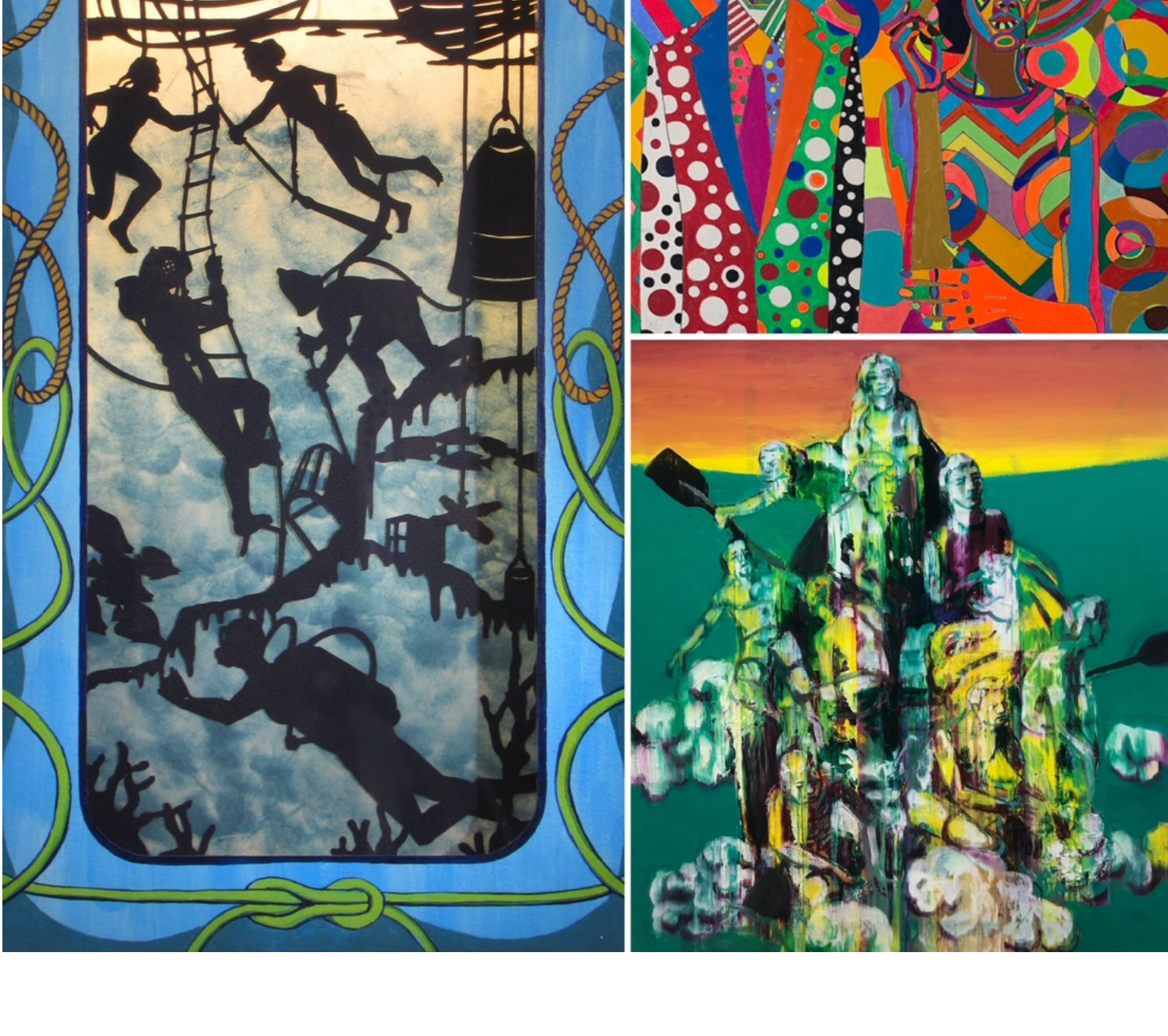


## MPA Celebrates 60 Years of Excellence!

In recognition of Women's History Month and the celebration of MPA's 60th anniversary, we applaud the six McLean women who founded the Emerson Gallery in McLean in 1962, which in 1985 incorporated as McLean Project for the Arts.

Throughout our history, MPA has been led by women Executive Directors, and we are proud to have exhibited the work of well over 1,500 Mid-Atlantic women artists! Join us in celebrating the many women who have built and led MPA yesterday, today, and tomorrow!

### Sponsor Our 60th Year!



## MPA Spring Solo Exhibitions Open April 14

MPA will open its three newest exhibitions on April 14, 2022. *Collide of Scope: Paintings by James Stephen Terrell* and *Where Do We Go From Here: New Paintings by Matt Pinney* will be on display in MPA's Emerson Gallery, while the Atrium Gallery will showcase *Labor and Leisure: Lightboxes by Melanie Kehoss*. An **Opening Exhibition Reception** will take place Thursday, April 14, 2022 at 7pm. [RSVP here](#). All three exhibitions run through June 11, 2022. MPA will also host a Virtual Artist Talk on Wednesday, April 11 at 7pm.

(Pictured, clockwise from top right: James Stephen Terrell, "All Dressed Up with No Where to Go"; Matt Pinney, "Sinking Ship"; Melanie Kehoss, "A Brief History of Diving")

### Exhibition Information



## Register Now for MPA Summer Art Camps

Registration for MPA's 2022 Summer Art Camps is now open, and spots are filling fast! Offerings include [MPA Art Camps](#) (ages 6-13) and [Abrakadoodle Camps](#) (ages 3-6), as well as our [CIT program](#). Sessions run June 27-August 12, with both half- and full-day options available. Sign up early to secure your spot!

Please review our [MPA Summer Camp Policies & Procedures](#) for information on how we have redesigned our in-studio camps to ensure the safety of our campers, staff, and community.

### Register for Summer Camp



## MPA ArtReach Visits Belvedere Elementary

FCPS's Belvedere Elementary 2nd graders received a virtual ArtReach presentation this week with ArtReach Director Sharon Fishel and ArtReach partner Anne Marenburg, referring to two recent MPA exhibitions -- *Building Form: Give and Take*, and *Intersectional Painting: Works by Sheila Crider*. Math and Art were the SOL (Standards of Learning) based focus of this ArtReach programming.

To followup on the virtual programming, Fishel visited three classes (60 students) in person Wednesday, for a followup paper weaving project that covered geometric shapes, vertical and horizontal lines and colorful patterns. A second visit is planned for later this Spring, in conjunction with MPA's Spring Solo exhibitions. We're excited to be back in FCPS classrooms again, and hope to be visiting more schools before the end of this year.

MPA's ArtReach is also looking forward to participating in the upcoming Sensory Awareness Day at The Old Firehouse in McLean, Wed., April 27. This unique and fun event, supporting [Autism Awareness Month](#), will provide ALL who attend a sensory exploration (taste, smell, sound, sight and touch). This event is free and open to ALL.

To support MPA's award-winning ArtReach programming, [click here](#).

### MPA ArtReach



## Last Chance to Register for Spring Art Classes!

Spring is officially here--and so is the start of MPA's Spring Art Classes! Classes begin April 11, and offerings include some of our long-time favorites, as well as exciting new options. Classes will take place online and in our DuVal Studio.

We are excited to introduce two **NEW** workshops, [Contemporary Art Focus: Painting & Mixed Media](#), taught by MPA's ArtReach Director Sharon Fishel, and [Layered Paper Art: A New Art Form](#) with Ronni Jolles:

- **Contemporary Art Focus: Painting & Mixed Media:** Working from individual drawings, painted images and photographs, students will create a series of paintings and drawings containing mixed media and collaged surfaces. Students will be encouraged to find and explore their own choices in terms of subject matter in addition to working from still life, photographs and patterned abstract paintings. Group critiques, art historical sources and individual experimentation will be encouraged. All skill levels welcome. Instructor: Sharon Fishel. Classes meet Fridays from 10am-12 noon, April 15-May 13 (5 lessons.) [Register here](#).
- **Layered Paper Art: A New Art Form:** Learn a fun and exciting new art form with the artist who created it! Using hundreds of kinds of paper--gathered from all over the world--you will learn how to create beautifully textured scenes. Students will gain skills in cutting, ripping, and manipulating the papers as they glue them, in layers, to stretched canvas. Instructor: Ronni Jolles. Classes meet Thursdays from 11am-1pm, May 5-26 (4 lessons). [Register here](#).

Other Spring class offerings include:

- **Basic Abstract with Mixed Media** with M. Jane Johnson -- Mondays, 10am-12:30pm beginning April 11
- **Portrait and Figure Painting** with Jordan Xu -- Mondays, 7-9pm beginning April 11
- **Oil and Painting Studio** with Tom Morris -- Tuesdays, 9:30am-12pm beginning April 12
- **Color Theory (Virtual)** with Naomi Chung -- Tuesdays, 6:30-9:30pm beginning April 12
- **Painting Flowers in Watercolor (Virtual)** with Lubna Zahid -- Wednesdays, 5-7:30pm beginning April 13
- **Advanced (Continuing) Watercolor (Virtual)** with Barbara Januszkievicz -- Thursdays, 10am-12pm beginning April 14
- **Vibrant Flower Paintings in Oil (Virtual)** with Joyce Lee -- Thursdays, 7-9:30pm beginning April 14
- **Drawing and Painting Studio** with David Carlson -- Thursdays, 7-9:30pm beginning April 14

We are also offering a **NEW Youth and Watercolor Studio** with Pamela Saunders, on Wednesdays from 10-11:30am beginning April 13. And for our youngest artists, we have new sessions of Abrakadoodle Twoosy Doodlers ([Tuesday](#) and [Saturday](#)) and Abrakadoodle Mini Doodlers ([Tuesday](#) and [Saturday](#)).

[Visit our website](#) for a complete list of course offerings.

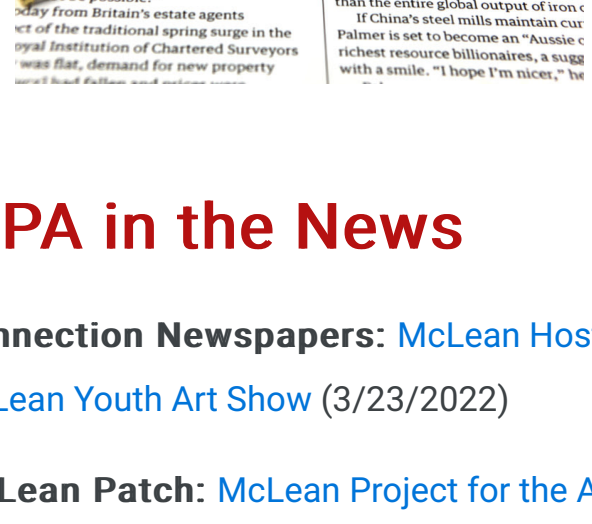
### Spring Art Class Offerings

## FOLLOW US

## Follow MPA Events on Instagram!

We are excited to announce the launch of the MPA Events ([@mp4events](#)) Instagram account. Follow us for up-to-the-minute updates and details on MPA's events, as well as fun throwbacks, takeovers, volunteer spotlights, behind-the-scenes sneak peaks, and more.

### Follow MPA Events!



## MPA in the News

Connection Newspapers: [McLean Hosts McLean Youth Art Show](#) (3/23/2022)

McLean Patch: [McLean Project for the Arts to Showcase Spring Exhibitions](#) (3/11/2022)



## Support MPA with AmazonSmile

If you're looking for a simple, automatic way to continue supporting MPA, consider starting your Amazon shopping at [www.smile.amazon.com](#). You shop as you normally would on the site--at no extra cost--and you don't need to make a separate account. The AmazonSmile program donates .5% of your eligible purchases to MPA. For more information on how to use AmazonSmile, [click here](#).

## MPA Calendar of Events

**April 14, 7pm:** [Opening Exhibition Reception for Spring Solos](#)

**April 14-June 11:** Spring Solo Exhibitions, featuring work by Melanie Kehoss, Matt Pinney, and James Stephen Terrell

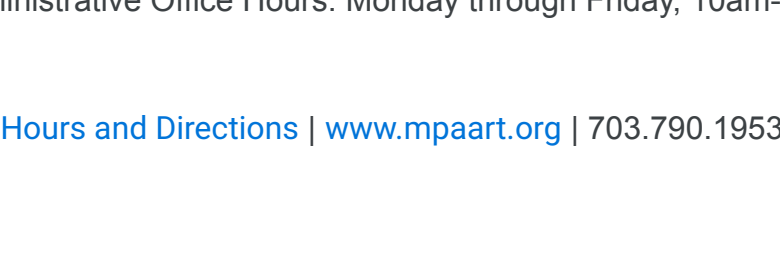
**Wednesday, May 11:** Spring Solo Exhibitions -- Virtual Artist Talk

**Thursday, May 12:** MPA Spring Benefit

**Sunday, September 18:** MPA 60th Anniversary Gala at Capital One Hall

**Sunday, October 2:** 16th Annual MPAartfest in McLean Central Park, 10am-4pm

[→ DONATE NOW!](#)



1234 Ingleside Avenue, McLean, VA 22101  
Gallery Hours: Tuesdays through Fridays, 1-4pm; Saturdays 10am-3pm  
Administrative Office Hours: Monday through Friday, 10am-4pm  
[Hours and Directions](#) | [www.mpaart.org](#) | 703.790.1953