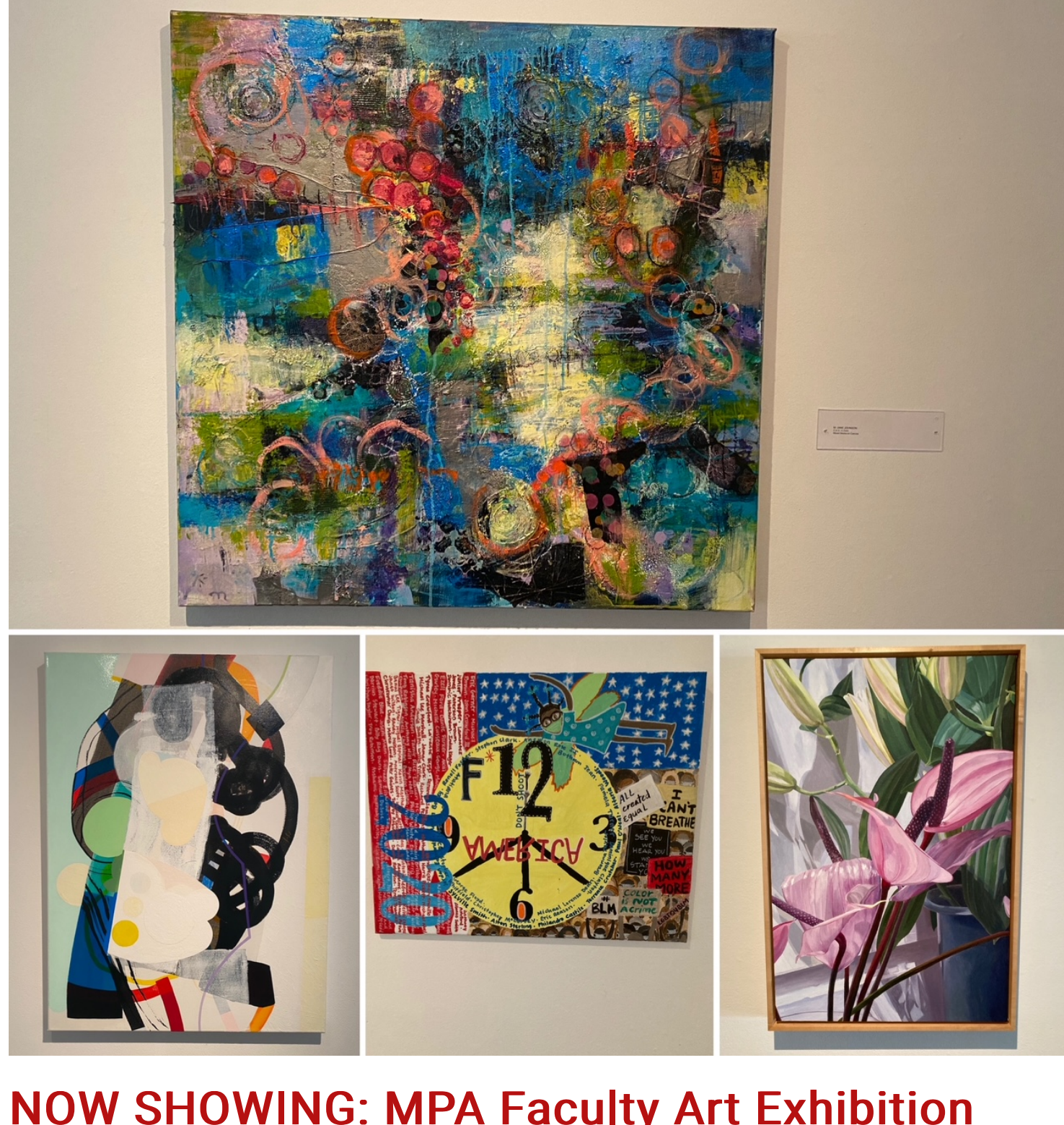


McLean Project for the Arts



NOW SHOWING: MPA Faculty Art Exhibition

Visit MPA's Atrium Gallery now through August 15, 2021 for our Faculty Art Exhibition.

The show features works from a number of our faculty, including:

- David Carlson
- Naomi Chung
- Barbara Januszkiewicz
- M. Jane Johnson
- Rula Jones
- Joyce Lee
- Pamela Saunders
- Kerry Vosler
- Jordan Xu
- Lubna Zahid

Exhibit Information



Call for Submissions: (Not) Strictly Painting

Deadline: July 18

Attention all painters: **MPA is currently seeking submissions for our Fall 2021 exhibition, (Not) Strictly Painting.**

(Not) Strictly Painting is a juried biennial exhibition celebrating the depth and breadth of paintings—or works related in some way to painting—from artists throughout the mid-Atlantic area.

Now in its 13th iteration, *Strictly Painting* is one of the region's most important painting exhibitions. *(Not) Strictly Painting* will be juried by **Foon Sham**, Virginia-based artist and Professor of Art at the University of Maryland, College Park, and **Virginia Treanor**, Associate Curator at the National Museum of Women in the Arts. The exhibit runs September 18 - November 13, 2021 at McLean Project for the Arts.

There is no fee for submission. A 25% sales commission will be retained by MPA on all sales resulting directly from the exhibition. Work will be sold at the price listed on the typed image checklist unless marked Not For Sale (NFS). Additional rules and submission instructions are available here: <https://tinyurl.com/notstrictlypainting>.

The deadline for submissions is **July 18, 2021 at midnight**.

Submission Information



Additional Summer Camp Spaces Available

Join us July 26-30 for Hand-Building with Clay!

Looking for a fun kids art camp the week of July 26-30?

We had a glitch in our reservation process, and have a few openings in our always popular [Hand-Building with Clay](#) camp! Spots are open in both groups, for ages 6-8 and 9-12.

Campers will explore the exciting world of hand building with clay through a variety of techniques, including slab, pinch, and coil construction. They will also crest beautiful decorative patterns with various sculpting tools and stencils.

Additional weeks with spaces still available include:

- Week 3: [Abakadoodle](#) (Afternoon)
- Week 4: [Exploring Color](#) (Morning, Ages 9-12; Afternoon, Ages 6-8)
- Week 5: [Camp Abakadoodle](#) (Afternoon)
- Week 5: [Hand-Building with Clay](#) (All sessions still available)
- [Virtual Camp](#) (Morning)
- Week 6: [Camp Abakadoodle](#) (Afternoon)
- [Vosler Teen Studio](#)

Sessions run June 28 - August 13, 2021. In-studio camps will take place at MPA's studios and galleries in the McLean Community Center.

Join us for a variety of imaginative and fun week-long camps designed to ignite your child's creativity—register now!

Please note: The safety of our campers, staff, and community is at the forefront of our minds as we redesign our in-studio camps in this new environment. Please review our [MPA Summer Camp Policies & Procedures](#).

MPA Summer Art Camps



Save the Date! MPAartfest Returns to McLean Central Park October 3, 2021!

MPAartfest 2021 will consist of a one-day in-person juried fine arts and craft show held in McLean Central Park on October 3, 2021. During MPAartfest, Central Park is transformed into a lively landscape of mini art galleries showcasing and offering for sale the work of juried artists from throughout the Mid-Atlantic region. This FREE event features contemporary art, live music throughout the day from some of the DC-area's best musical talents, a Children's Art Walk, food vendors, and much more.

MPAartfest 2021 is made possible with the help of the McLean Community Center, and our partnership with the Fairfax County Park Authority.

MPAartfest Information



MPA ArtReach Update

MPA's [ArtReach](#) program continues to work with our many community partner organizations on a virtual basis as we gradually begin planning to resume in-person ArtReach programming.

ArtReach partner Sherry Woods from D.C.'s Unique Learning Center shared these photos of artwork created by her students in response to our recent Alonzo Davis exhibition, and the lesson plan and video tour of his work created by ArtReach Director Sharon Fishel. As Sharon commented, "Each work is unique with dynamic color, texture and collage elements. These works made my day!"

If you are connected with a local nonprofit or education organization that might be a potential ArtReach partner, please reach out to info@mpaart.org, and we'll follow up with them.

Your generous support makes MPA's ArtReach program possible. To make a gift, [click here](#).

MPA ArtReach



MPA in the News

Tyson's Reporter: [Morning Notes--MPAartfest Returns in Person This Fall](#) (7/1/2021)

Inside NOVA: [McLean Project for the Arts Adds 2 to Board](#) (6/17/2021)

Tyson's Today: [McLean Project for the Arts Elects New Board Members](#) (6/14/2021)



Support MPA with AmazonSmile

If you're looking for a simple, automatic way to continue supporting MPA, consider starting your amazon shopping at www.smile.amazon.com. You shop as you normally would on the site—at no extra cost—and you don't need to make a separate account. The AmazonSmile program donates .5% of your eligible purchases to MPA. For more information on how to use AmazonSmile, [click here](#).

→ DONATE NOW!



1234 Ingleside Avenue, McLean, VA 22101
View modified gallery hours [here](#).

[Hours and Directions](#) | www.mpaart.org | 703.790.1953