



McLean Project for the Arts

MPA Updates | February 5, 2021



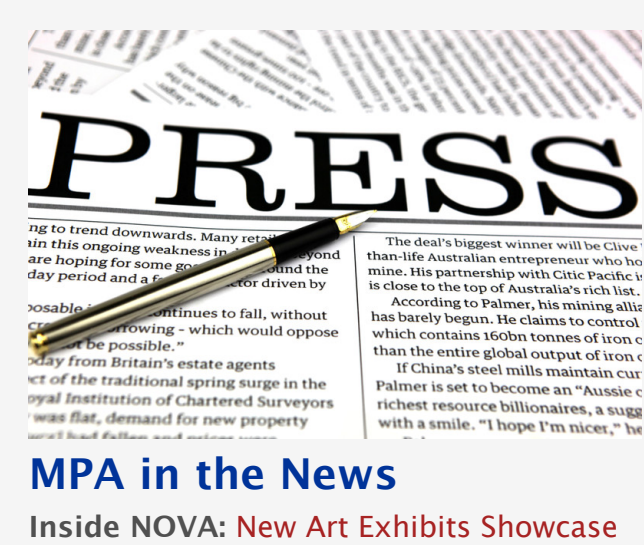
Register NOW for MPA Summer Art Camps

Registration is now open for MPA's 2021 Summer Art Camps—both virtual and in-studio. Offerings include MPA Art Camps (ages 6–12) and Abakadoodle Camps (ages 3–6), as well as teen camps and our CIT program.

- MPA Summer Art Camps (ages 6–12):** Join us for a variety of imaginative and fun week-long camp sessions. Each week will feature different art activities that will ignite your child's creativity. Taught by MPA's experienced art educators, topics include Magical & Mythical Creatures; Comic Books; Crazy, Wacky Sculptures; STEAM, Art + Nature; Under the Sea; The Artist Within; Exploring Color; Surrealist Art; Hand-Building with Clay; Book Making; Pop Art; Unconventional Creations; and Celestial Art.
 - In-Studio Camps:** Sessions run June 28 – August 13 from 9am–12pm (morning session) and 1–4pm (afternoon session). Campers have the option of attending both sessions for a full-day experience. Tuition \$260 per session/\$245 MCC district residents. [Learn more.](#)
 - Online Camps:** Sessions run June 28 – August 13 from 10–11:15am (morning) and 1–2:15pm (afternoon). Virtual camps will be held through Zoom. Camp tuition includes supply kits that will be available for contactless pickup from MPA. Tuition \$175/session. [Learn more.](#)
- Camp Abakadoodle (ages 3–6):** This popular series of imaginative art camps for children is based on the learning principles of Jean Piaget. Each half-day camp offers unique experiences designed to foster creativity. Each week of camp features a different theme. Sessions run June 28 – August 13 from 9:30am–12pm (morning) and 1:30–4pm (afternoon). Tuition \$195 per session / \$184 MCC district residents. [Learn more.](#)
- Teen Summer Opportunities:** Older students are invited to join MPA for our Vosler Young Artists' Studio, or to participate in MPA's Counselor in Training Program (CIT).
 - Vosler Young Artists' Studio (ages 14–18):** Join us as we welcome back Kerry Vosler and her highly regarded atelier studio for the sixth year! This in-demand workshop will introduce the young artist to a classical atelier program of instruction. Session runs August 16 – 20 from 9:30am–4pm. Tuition \$460 / \$435 MCC district residents. [Learn more.](#)
 - MPA's Counselor in Training Program (CIT):** MPA's Counselor in Training Program was developed to enrich the experience of older campers at our summer art camps. This program is designed to encourage teaching and leadership skills. CITs will assist in planning and leading activities for our young campers. Please contact Briana Clorey (bclorey@mpaart.org) to fill out the CIT application. [Learn more.](#)

Please note: The safety of our campers, staff, and community is at the forefront of our minds as we redesign our in-studio camps in this new environment. Please review our MPA Summer Camp Policies & Procedures.

[Learn More](#)



MPA in the News

Inside NOVA: New Art Exhibits Showcase Bold Abstracts, Intricate Patterns (2/2/2021)

Inside NOVA: InFive: InsideOut [Joseph Cortina] (2/1/2021)

East City Arts: Review—Pattern and Texture: Shanthi Chandrasekar and Joseph Cortina at McLean Project for the Arts (1/25/2021)

Tysons Reporter: Local Arts Organizations Get Boost from COVID-19 Relief Grants (1/20/2021)

Modern Luxury DC: Mission Critical (December 2020)



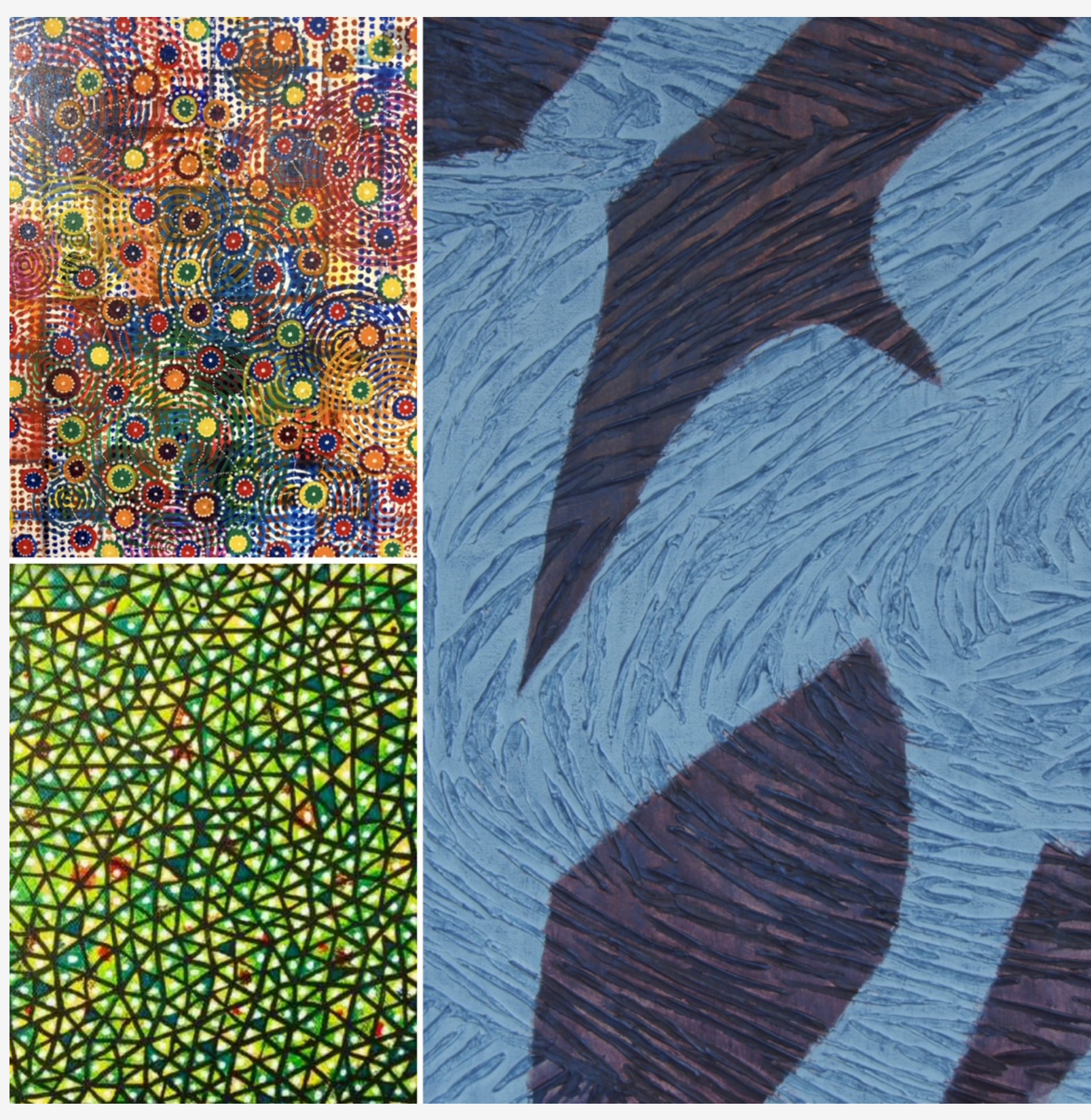
Support MPA with AmazonSmile

If you're looking for a simple, automatic way to continue supporting MPA, consider starting your Amazon shopping at www.smile.amazon.com. You shop as you normally would on the site—at no extra cost—and you don't need to make a separate account. The AmazonSmile program donates .5% of your eligible purchases to MPA. For more information on how to use AmazonSmile, click here.

UPDATED! Curate Your Email Preferences

MPA is continually updating our email system to ensure you receive the communications that are of primary importance to you. Please use the form below to update your preferences. Also, be sure to mark info@mpaart.org as a safe sender, to ensure that our emails don't get lost in your spam folder!

[Email Preferences](#)



Closing February 20, 2021

Vertical Interval: New Works by Joseph Cortina and Beginningless Endless: Works by Shanthi Chandrasekar

Don't miss the chance to experience MPA's winter exhibitions, *Vertical Interval: New Works by Joseph Cortina* (Emerson Gallery) and *Beginningless Endless: Works by Shanthi Chandrasekar* (Atrium Gallery), both of which close February 20, 2021. The exhibitions were underwritten by JBG Smith, and are available online. A recording from our Virtual Opening Reception and Artist Talk is also available on our website, as well as *Vertical Interval* and *Beginningless Endless* exhibition overview videos.

Looking for a COVID-safe activity for an upcoming Thursday or Saturday? MPA has limited reservations available to visit our Shanthi Chandrasekar and Joseph Cortina exhibitions in our Atrium and Emerson Galleries. In a recent East City Arts article, reviewer Claudia Rousseau, Ph.D. writes "The reality is that we have to see it, to see it."

Don't miss this opportunity for an in-person visit! [Read Dr. Rousseau's review here](#), and visit our website to make your reservation. The Atrium Gallery is also open to visitors during regular MCC hours of operation.

(Pictured, from top left: Shanthi Chandrasekar, "Particles & Fields"; Joseph Cortina, "Bluewalker"; Shanthi Chandrasekar, "Multiverse-Triangles")

[Learn More](#)



Third Space Network and Coalition Present: Online Public Dialogues--Raw Hope of Humanity

MPA is proud to announce our participation as part of the #RawHope coalition. Comprised of DC and DMV art organizations and museums at the forefront of the local creative economy, the Raw Hope coalition was formed by Third Space Network for action and social change. Tune in for the first panel discussion, "The Social Impact of Mural Art", on February 17 at 6pm. The panel will discuss mural art in public spaces as an expression of social and political resistance, providing a collaborative platform for community action.

For more information or to register for the discussion, [click here](#).

[Learn More](#)

ArtReach

MPA's longstanding award-winning arts outreach program is now open to professional exhibiting artists with a program curriculum designed to help you create art.

Try this week's activity featuring work from Beginningless Endless

Meet the Artist

Works by Shanti Chandrasekar

Shanti Chandrasekar's painting, *Beginningless Endless*, is a vibrant, multi-colored abstract work. She uses a variety of materials, including paper, fabric, and found objects, to create a complex, layered composition. Her work is characterized by bold colors and intricate patterns, often inspired by nature and her travels.

Your Activity

Create your own beautiful "pocket" drawing on paper where the design begins in center of a circle and moves outward. Consider using one set of your drawings as a circular sketch and use it as a special handmade ornament.

Art Materials: Colored paper, white paper, black construction paper or colored paper on white paper.

Guidelines:

- Trace around the outer edge of your paper plate using a pencil (or cut by hand).
- Use one color to create a circle in the center of your drawing, coloring in half and leaving the other half white. Use the "pocket" drawing from the center of the circle, leaving the paper as you draw.
- Use the different parts of your work with your own personal patterns and colors. Draw, paint, or use other materials to fill the white space around the circle and white space drawing for later.
- Use the different parts of your work with your own personal patterns and colors. Draw, paint, or use other materials to fill the white space around the circle and white space drawing for later.

You can take one drawing to be made a large drawing on a sheet of paper and use it with some other art using your own drawing as a beautiful ornament.

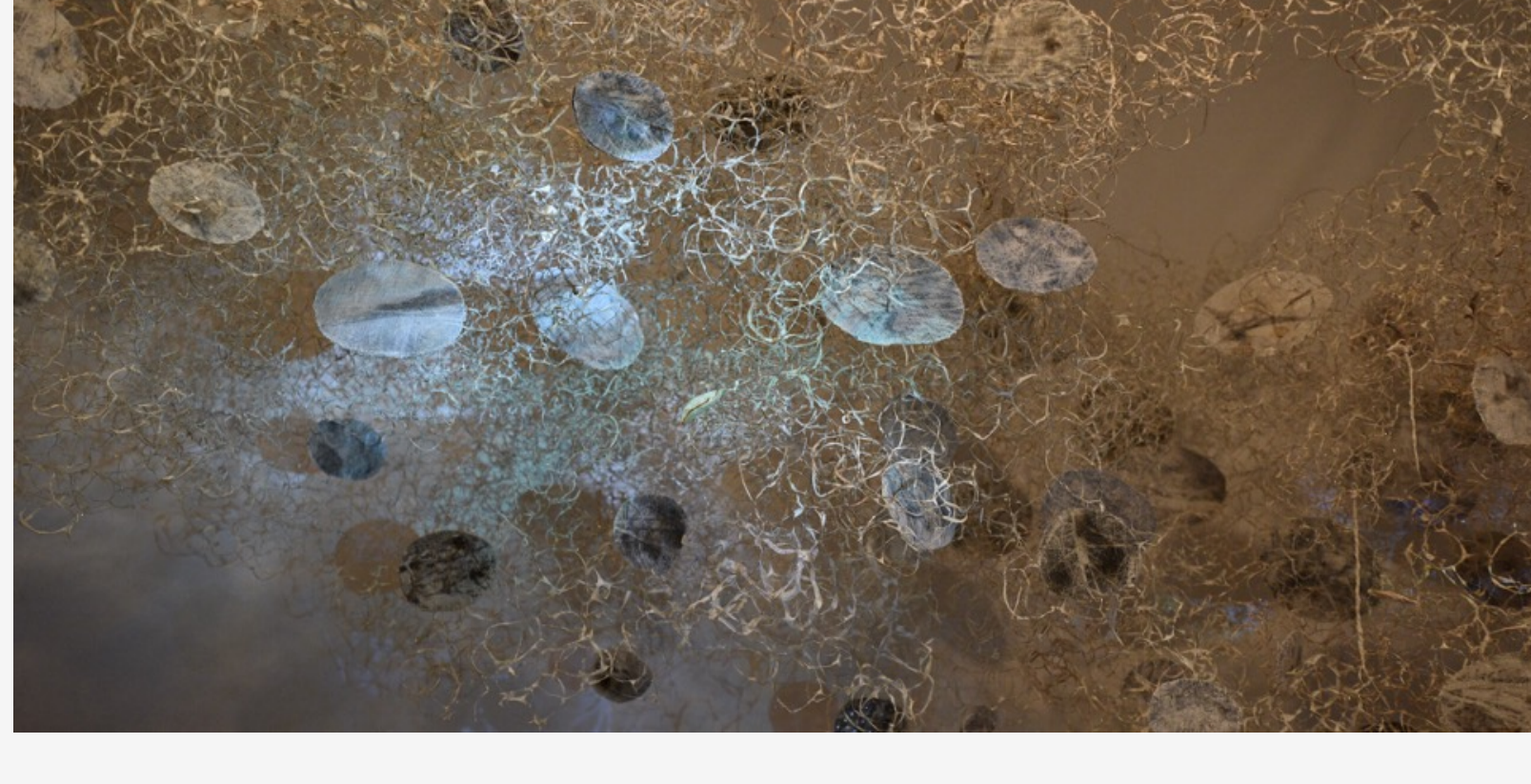
MPA ArtReach Spotlight

MPA's ArtReach program continues to reach out to our 11 community partners with activity fliers based on our current exhibitions, including this latest example featuring the art of Shanti Chandrasekar. An ArtReach video tour of the exhibition with program director Sharon Fishel was also shared with partners.

Our reach into the local community recently came full circle. Artist Kyujin Lee—whose art was shown in our Atrium Gallery last year—is now sharing our ArtReach program with her students at a school in Alexandria.

Your support makes MPA's ArtReach program possible. To make a gift, [click here](#).

[Learn More](#)



Save the Date for these Upcoming Exhibitions

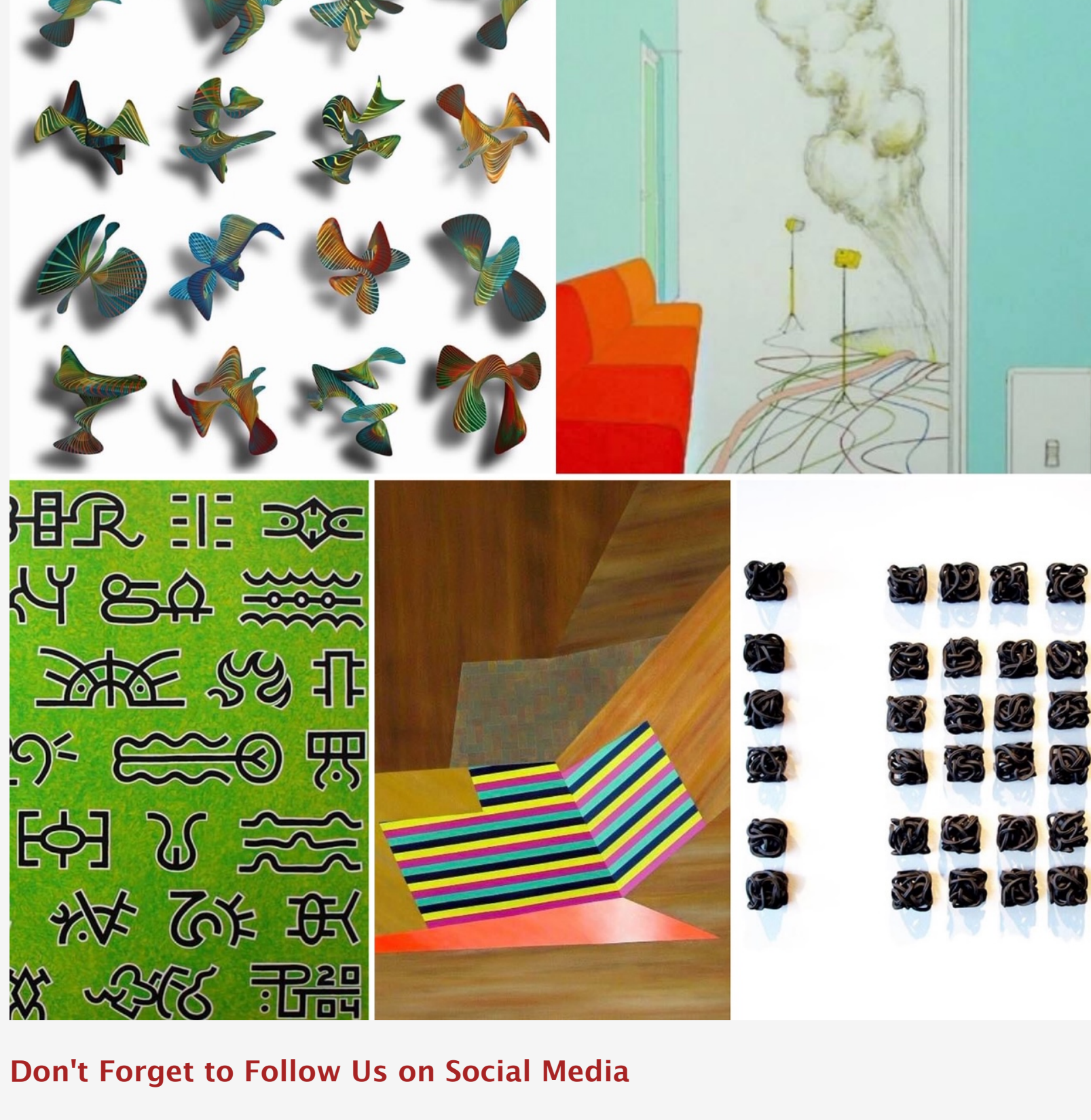
Mark your calendars for these spring 2021 MPA exhibitions:

- The Show Must Go On*, presented by the McLean Art Society (Atrium Gallery); March 2–13, 2021. Juried by Jessica Mickey, Arlington artist and former co-director of Gallery Underground in Arlington
- Intium Novum: Humanity's End As A New Beginning*, featuring artist Yuriko Yamaguchi and writer Mineke Schipper; April 1–June 10, 2021

Additional details to follow. For more information on these exhibits, [please visit our website](#).

(Pictured: Yuriko Yamaguchi, "No End")

[Learn More](#)



Don't Forget to Follow Us on Social Media

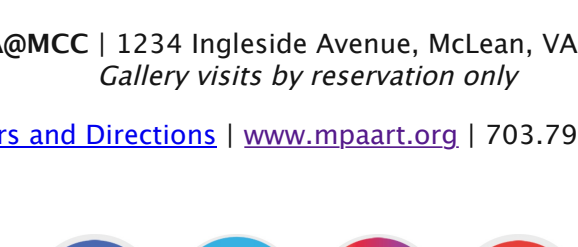
As we continue to social distance, stay connected with MPA through our social media—Twitter, Facebook, Instagram, and YouTube. Join us as we revisit past MPA exhibitions and explore MPA ArtReach art activities, which we're sharing with our community partners and through our social media. On Twitter, we're sharing opportunities from other sources that can help us navigate this "pause" in our daily lives, and our YouTube channel has all of our Virtual MPA Artfest Meet the Artist Talks. We look forward to connecting with you online!

McLean Project for the Arts (MPA) is funded in part by the National Endowment for the Arts, the Virginia Commission for the Arts, and ArtsFairfax.

Help MPA continue to connect Art and Community!

[DONATE NOW!](#)

MPA@MCC | 1234 IngleSide Avenue, McLean, VA 22101
Gallery visits by reservation only
[Hours and Directions](#) | www.mpaart.org | 703.790.1953



This email was sent to bnguyen@mpaart.org. If you are having trouble viewing this email, you may [also view it online](#). To opt out of all communications, [click here](#).

[Forward email](#)

[Tell Friend](#)



Please [visit our website](#) to reserve a timed pass to view our Emerson Gallery exhibit, "Vertical Interval." Our Atrium Gallery exhibition will be open during MCC open hours.