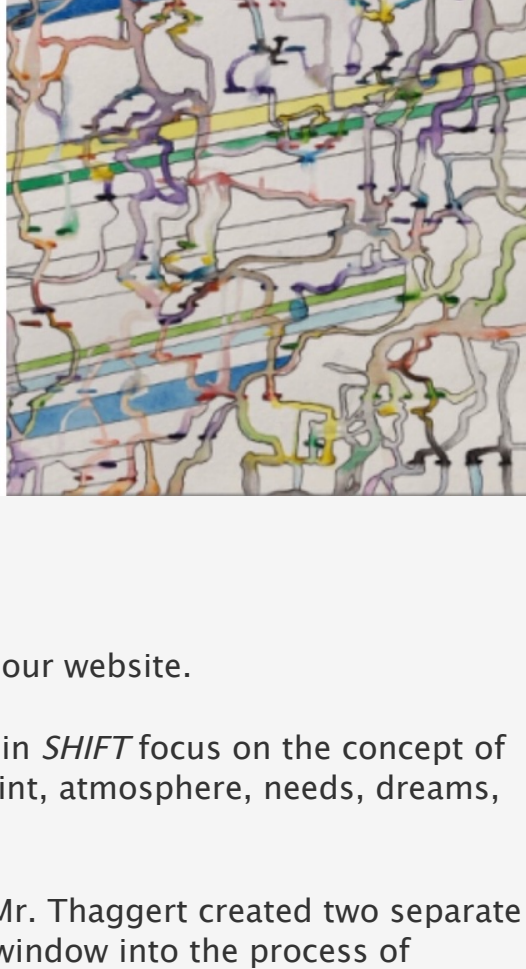
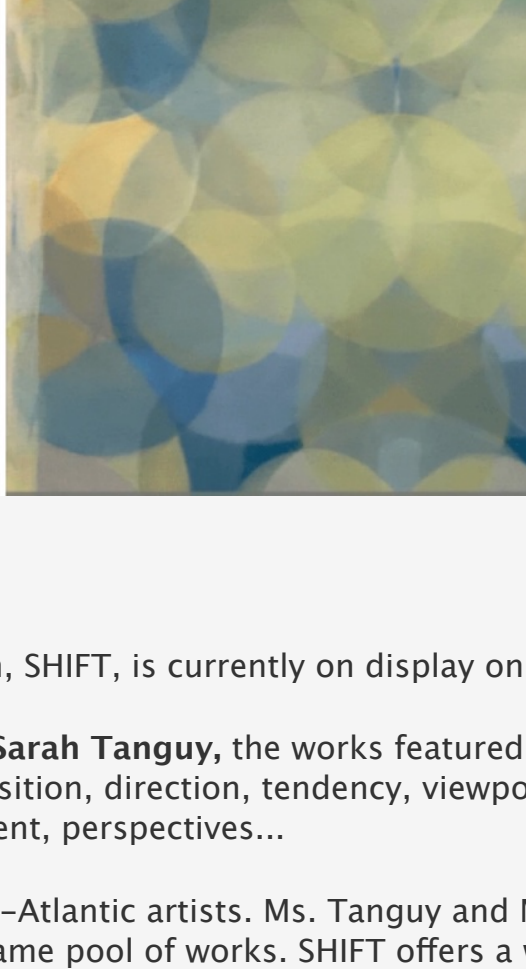
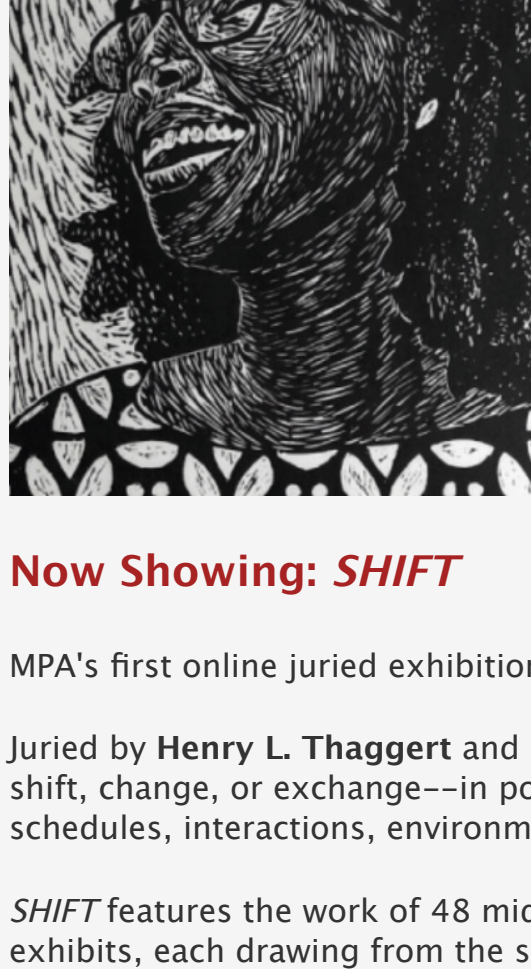
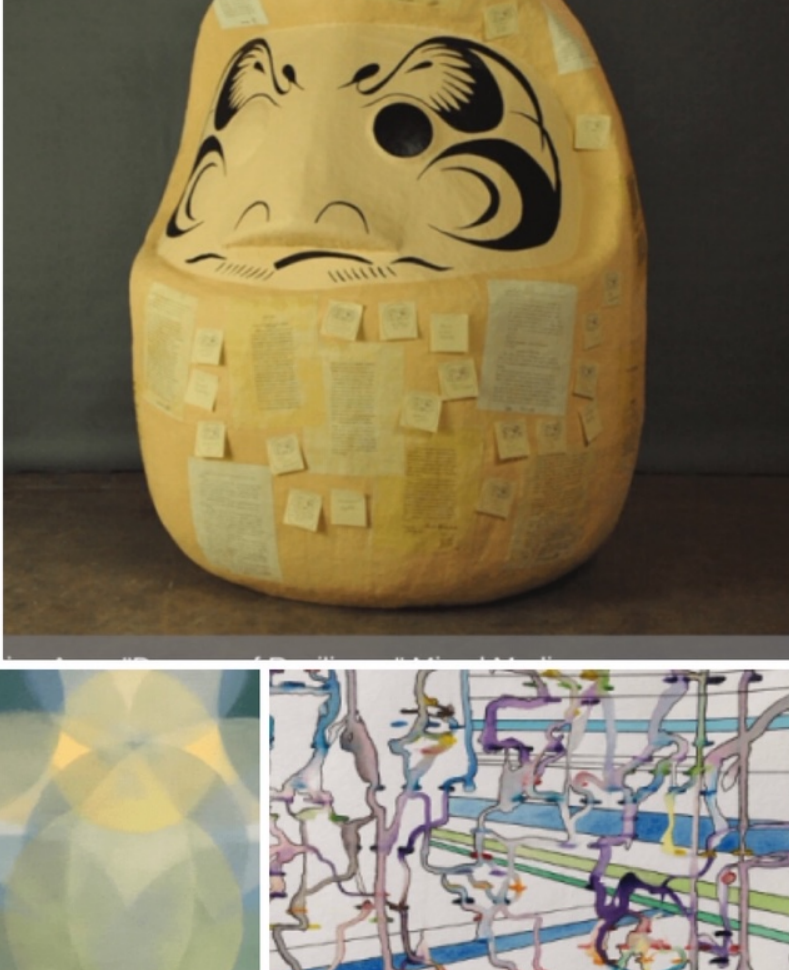




McLean Project for the Arts

MPA Updates | August 7, 2020



Now Showing: *SHIFT*

MPA's first online juried exhibition, *SHIFT*, is currently on display on our website.

Juried by **Henry L. Thaggert** and **Sarah Tanguy**, the works featured in *SHIFT* focus on the concept of shift, change, or exchange--in position, direction, tendency, viewpoint, atmosphere, needs, dreams, schedules, interactions, environment, perspectives...

SHIFT features the work of 48 mid-Atlantic artists. Ms. Tanguy and Mr. Thaggert created two separate exhibits, each drawing from the same pool of works. *SHIFT* offers a window into the process of making an exhibition, shedding light on how jurors and curators respond to works of art, shaping a unique vision that comes to life through the choices they make.

SHIFT runs through August 27, 2020.

[Click here to watch the video from our Virtual Juror/Artist Talk from July 23.](#)

(Pictured, from top left: Pamela Saunders, *The Time is Now*; Kristine Aono, *Drama of Resilience*; Pamela Arent, Untitled; Mira Hecht, *Embrace*; and LaToya Hobbs, *Sharbreon's Joy*).

[Learn More](#)

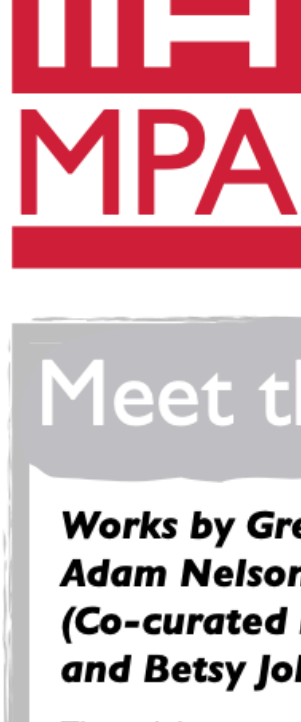


MPA Summer Art Camps Extended through September 4

MPA and Abtrakadoodle have extended our in-studio summer art camps through August! Newly added camps include some of our most popular options, like "Comic Books & Illustrations," "Hand Building with Clay," and more. **MPA Art Camps (ages 6-12)** offer both morning (9am - 12:00 noon) and afternoon (1-4pm) sessions. **Abtrakadoodle Camps (ages 3-6)** run 9:30am - 12:00 noon and 1:30-4pm.

Additional information on all camp offerings can be found on the website. Please Note: Refunds will be issued until 7 days prior to the start of camp, or by special arrangement. Enrollment must exceed 4 campers--please invite your friends! For more information, please review our **MPA Camp Policies & Procedures**. Contact Briana Clorey with any questions.

[Learn More](#)



ArtReach

MPA's longstanding, award-winning arts outreach program ArtReach couples work by professional exhibiting artists with a program curriculum allowing all of us to take part in creating art.

Try this week's activity featuring work from:
Nature As Prototype

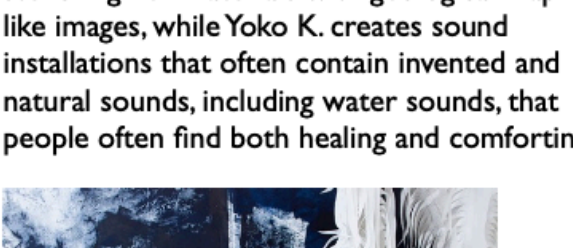
Meet the Artist

Works by Grethe Wittrock, Adam Nelson, and Yoko K. (Co-curated by Elsabé Johnson Dixon and Betsy Johnson)

This exhibition aims to examine the role of nature and biology as a source of inspiration and to also ask questions about how human beings have forever changed the natural world. How have we affected and forever changed our natural ecosystems? What are different ways that we "think" about the "natural world" around us during this time, including how we map and record nature?

The exhibition artists - Adam Nelson, Yoko K., and Grethe Wittrock - collaborated with the co-curators to create the in-gallery installation exhibition, "Nature As Prototype." This exhibition contained multi-media art works that examined how art and design are linked to scientific, biological, and mathematical realms. Each artist's work acknowledged the ever-changing affect that humans beings have on the natural world.

Adam Nelson creates works that reflect both the man-made and natural world. Grethe Wittrock uses fabric for her sculptural installations -- often taken



Adam Nelson

from boat sail material, printing on and stenciling her materials with geological map-like images, while Yoko K. creates sound installations that often contain invented and natural sounds, including water sounds, that people often find both healing and comforting.



Grethe Wittrock

Exhibited at McLean Project for the Arts

Turn over for fun activities

MPA ArtReach Continues Community Partnerships

Under the leadership of director Sharon Fishel, MPA's ArtReach program has continued our outreach with our many community partners during this COVID-19 pause in our lives.

Along with our Zoom classes for seniors through the Lewinsville Senior Center, and ServiceSource clients, our weekly ArtReach activity fliers are distributed to more than 500 participants each week through our partner organizations, and posted on our Facebook page for everyone to share in the fun.

Take a moment to enjoy our latest ArtReach activity. We'd love to see examples of your work! Email photos to Sharon Fishel at sfishel@mpaart.org.

[Learn More](#)



MPAartfest

connecting art and community

MPAartfest Goes Virtual for 2020!

Planning is well underway for MPA's first Virtual MPAartfest, to take place October 4-18, 2020. Our festival typically unfolds in McLean Central Park the first Sunday in October. Due to the COVID-19 global pandemic, however, this year we are working with our artists and partners to reimagine our festival as a virtual experience online. We look forward to hosting Virtual MPAartfest that marries our much-loved MPAartfest traditions like the New Dominion Women's Club Children's Art Walk and the artist galleries with exciting new events such as artist talks, class demonstrations, and more. Mark your calendars and join us October 4-18 for 2 full weeks of art, music, and community fun!

[Learn More](#)



Don't Forget to Follow Us on Social Media

As we all continue to social distance, stay connected with MPA through our social media--[Twitter](#), [Facebook](#) and [Instagram](#). Join us as we revisit past MPA exhibitions and explore weekly MPA ArtReach art activities--which we're sharing with our community partners and through our social media. On Twitter, we're sharing opportunities from other sources that can help us navigate this "pause" in our daily lives. We look forward to connecting with you online!

McLean Project for the Arts (MPA) is funded in part by the National Endowment for the Arts, the Virginia Commission for the Arts, and ArtsFairfax.

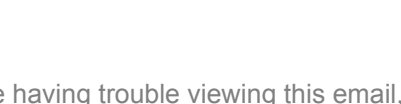
Help MPA continue to connect Art and Community!

[→ DONATE NOW!](#)

MPA@MCC | 1234 Ingleside Avenue, McLean, VA 22101
Gallery & Office Hours:

Tues - Sat: 10:00 am - 4:00 pm
Closed Sunday & Monday

[Hours and Directions](#) | www.mpaart.org | 703.790.1953



This email was sent to bnguyen@mpaart.org. If you are having trouble viewing this email, you may [also view it online](#). To opt out of all communications, [click here](#).

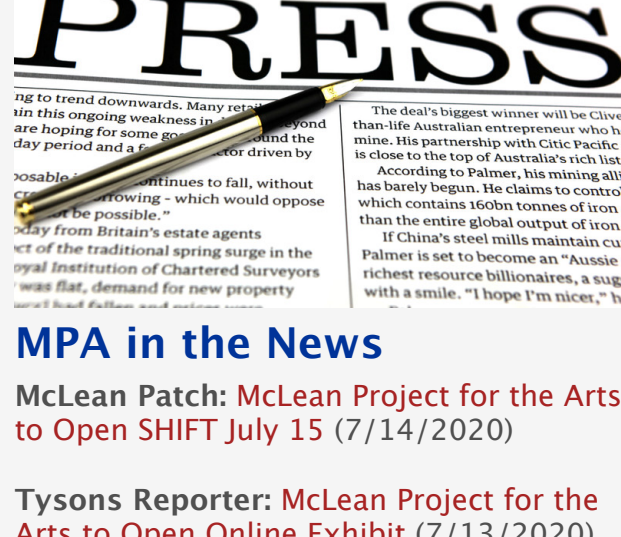
[Forward email](#)

[Tell Friend](#)

Email Marketing By

[neoncrm](#)

www.neoncrm.com



MPA in the News

McLean Patch: McLean Project for the Arts to Open SHIFT July 15 (7/14/2020)

Tyson's Reporter: McLean Project for the Arts to Open Online Exhibit (7/13/2020)

Tyson's Reporter: McLean Project for the Arts Receives \$50,000 Federal Grant (7/9/2020)

Inside NOVA: McLean Project for the Arts Receives \$50,000 Grant from NEA (7/9/2020)

UPDATED! Curate Your Email Preferences

MPA is continually updating our email system to ensure you receive the communications that are of primary importance to you. Please use the form below to update your preferences. Also, be sure to mark info@mpaar.org as a safe sender, to ensure that our emails don't get lost in your spam folder!

[Email Preferences](#)